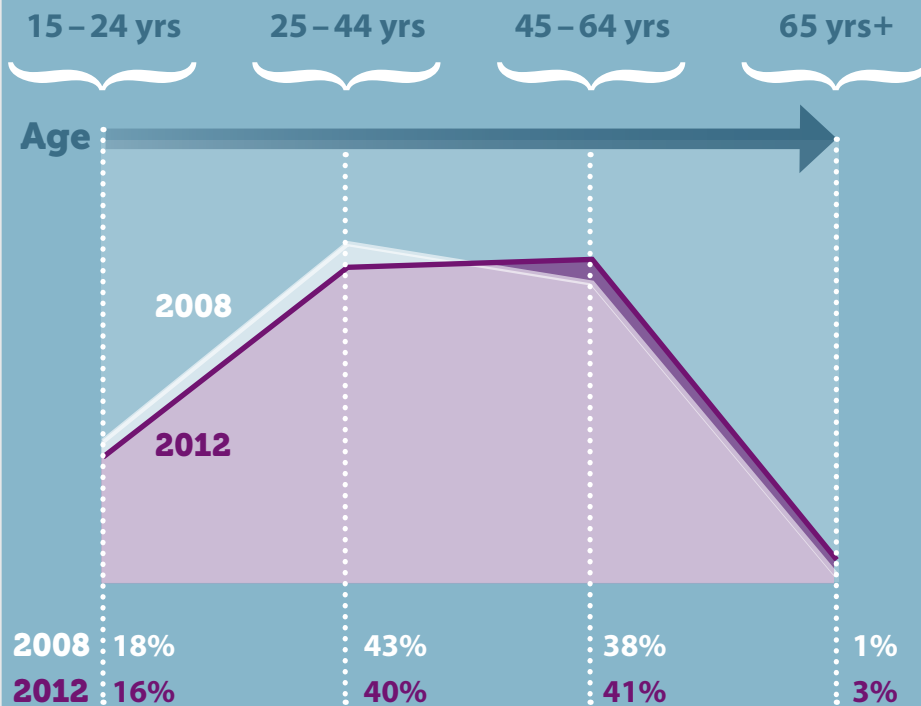


women in Nova Scotia

Seniors (65+)

Key  ● female ● male

Aging female work force

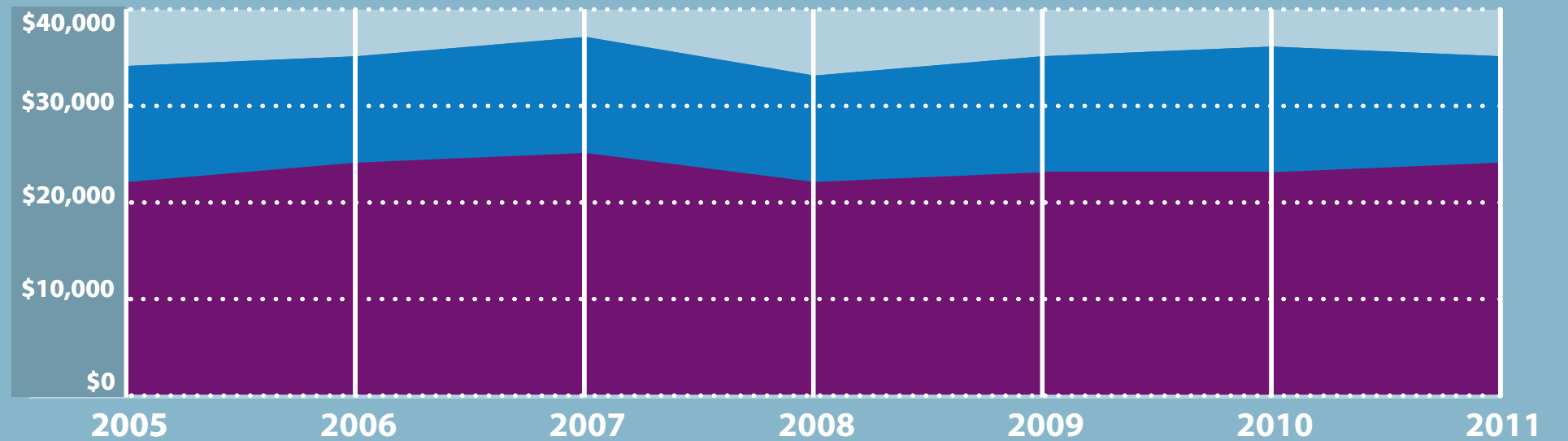


The province's aging demographic is reflective in the changes in its work force. In the past five years, there has been a slight decrease in the female labour force in the 15-24 age bracket and the proportion of the labour force for women 65 years and over has more than doubled since 2008.

Average income



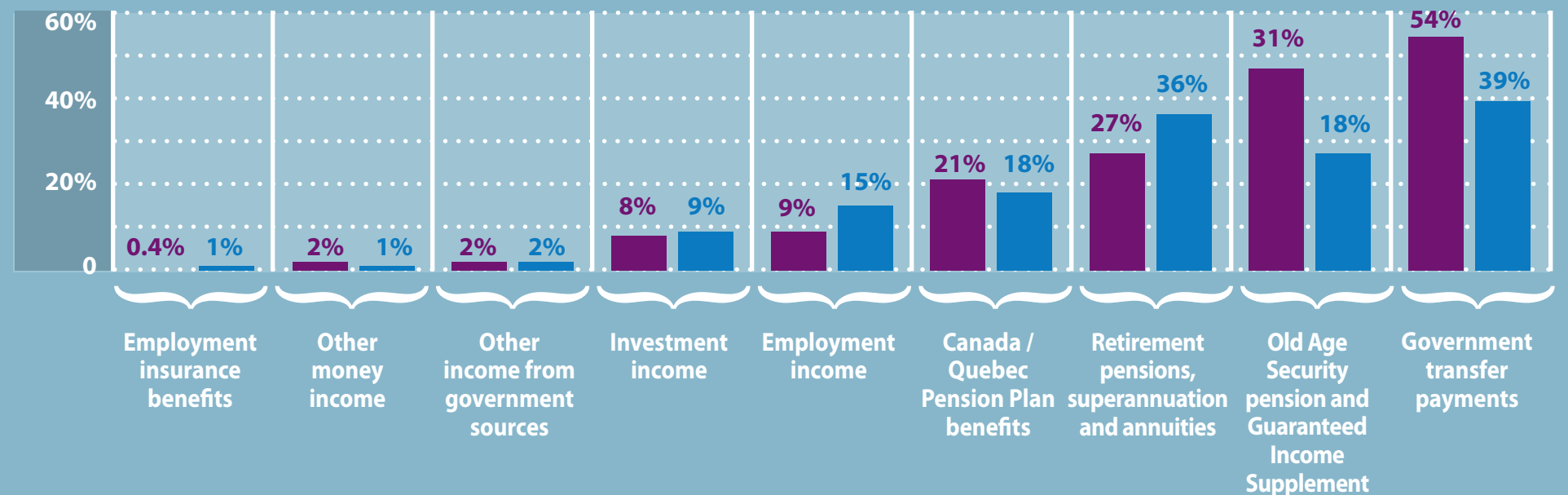
incomes of women aged 65 and over are \$10,000 LESS than men aged 65 and over



In 2011, over **20%** of women aged 65 and over were **living in low income** compared to **14.5%** of men.

Income sources

Women over the age of 65 are far more reliant on government transfer payments including Old Age Security (OAS), Guaranteed Income Supplement (GIS) and Canadian pension Plan (CPP) than men of the same age.



Pensions



Registered pension plan members in Nova Scotia in 2011

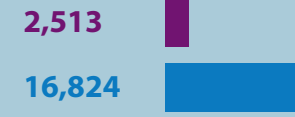
Contributory plan

A registered pension plan where employees are required to pay part of the cost of the benefits.



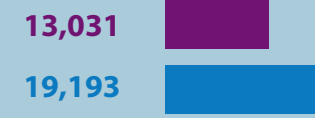
Non-contributory plan

A registered pension plan where the employer pays 100% of the cost of the benefits.



Defined contribution pension plan

- A form of savings for retirement where you and your employer contribute an established amount to your pension each year.
- Your contribution is usually a percentage of your pay.
- The value of the pension is based on the performance of the investments.
- Amount of the pension is uncertain.



Defined benefit pension plan

- An agreement where the employer promises to pay a certain amount of money each year after retirement.
- Employees often but do not always make contributions in addition to their employer's contribution.
- How much you receive depends on a formula, generally based on your income and years worked.



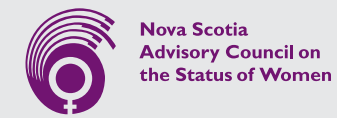
Private sector

Includes incorporated and unincorporated businesses, religious, charitable and other non-profit organizations, co-operatives, trade or employee associations, and private educational and health institutions.



Public sector

Includes municipal, provincial and federal governments and enterprises, crown corporations, government boards, commissions and agencies, and public educational and health institutions.



Statistics current as of November, 2013.

SOURCES

- Aging female work force: Statistics Canada, Table 282-0002 Labour force survey estimates
- Average income: Statistics Canada, Table 202-0307 – Income of individuals by sex, age group and income source
- Income sources: Statistics Canada – 2011 National Household Survey. Catalogue Number 99-014-X2011032
- Pensions: DCP and DBP - www.fcac-acfc.gc.ca/Eng/forConsumers/LifeEvents/planningRetirement/Pages/CompanyP-Rgimesde.aspx • statistics - Table280-0008 - Registered pension plan (RPP) members, by area of employment, sector, type of plan and contributory status, annual, CANSIM (database). (2007-2011)